

What's New in LiveNX 22.2.0

- Added drive status monitoring of LiveAction LiveWire appliances.

The screenshot displays the 'Dell Disk State (SNMP)' report for device 'reporttester3'. The report shows a time-series chart from 08:57 to 09:11, with all disks in an 'online' state. Below the chart is a table with the following columns: Disk Name, Last State, ready, failed, online, offline, degraded, recovering, removed, nonRaid, notReady, resyncing, replacing, spinningDown, rebuild, and noMedia. All 'Last State' values are 'online', and all other status columns show '0%'.

Disk Name	Last State	ready	failed	online	offline	degraded	recovering	removed	nonRaid	notReady	resyncing	replacing	spinningDown	rebuild	noMedia
Physical Disk 0:1:0	online	0%	0%	100%	0%	0%	0%	0%	0%	0%	0%	0%	0%	0%	0%
Physical Disk 0:1:10	online	0%	0%	100%	0%	0%	0%	0%	0%	0%	0%	0%	0%	0%	0%
Physical Disk 0:1:12	online	0%	0%	100%	0%	0%	0%	0%	0%	0%	0%	0%	0%	0%	0%
Physical Disk 0:1:14	online	0%	0%	100%	0%	0%	0%	0%	0%	0%	0%	0%	0%	0%	0%
Physical Disk 0:1:16	online	0%	0%	100%	0%	0%	0%	0%	0%	0%	0%	0%	0%	0%	0%
Physical Disk 0:1:2	online	0%	0%	100%	0%	0%	0%	0%	0%	0%	0%	0%	0%	0%	0%
Physical Disk 0:1:4	online	0%	0%	100%	0%	0%	0%	0%	0%	0%	0%	0%	0%	0%	0%
Physical Disk 0:1:6	online	0%	0%	100%	0%	0%	0%	0%	0%	0%	0%	0%	0%	0%	0%
Physical Disk 0:1:8	online	0%	0%	100%	0%	0%	0%	0%	0%	0%	0%	0%	0%	0%	0%
Physical Disk 0:1:11	online	0%	0%	100%	0%	0%	0%	0%	0%	0%	0%	0%	0%	0%	0%
Physical Disk 0:1:12	online	0%	0%	100%	0%	0%	0%	0%	0%	0%	0%	0%	0%	0%	0%
Physical Disk 0:1:13	online	0%	0%	100%	0%	0%	0%	0%	0%	0%	0%	0%	0%	0%	0%
Physical Disk 0:1:14	online	0%	0%	100%	0%	0%	0%	0%	0%	0%	0%	0%	0%	0%	0%
Physical Disk 0:1:15	online	0%	0%	100%	0%	0%	0%	0%	0%	0%	0%	0%	0%	0%	0%
Physical Disk 0:1:16	online	0%	0%	100%	0%	0%	0%	0%	0%	0%	0%	0%	0%	0%	0%
Physical Disk 0:1:17	online	0%	0%	100%	0%	0%	0%	0%	0%	0%	0%	0%	0%	0%	0%

- Enhanced Custom OID Alerts to include more operators: <, >, <=, >=, ==, and !=.

The screenshot shows the 'Alert Management' section with a list of alerts. The 'Application Performance - Network Delay' alert is selected, and its configuration is shown in the 'INSTANCE DETAILS' panel. The configuration includes a 'Delay Time' of 30 ms for the 'CRITICAL' severity level.

ALERT TYPE	ENABLED	AFFECT STATUS	CATEGORY
Application Performance - App Delay	<input type="checkbox"/>	✓	Application
Application Performance - Network Delay	<input checked="" type="checkbox"/>	✓	Application
BGP Peer Connection Change	<input checked="" type="checkbox"/>		Network
Cisco IWAN Path Change	<input type="checkbox"/>		Network
Cisco IWAN Threshold Crossing	<input type="checkbox"/>		Network
Cisco SD-WAN Performance - Jitter Value	<input type="checkbox"/>		Network
Cisco SD-WAN Performance - Network Delay	<input type="checkbox"/>		Network
Cisco SD-WAN Performance - Packet Loss	<input type="checkbox"/>		Network
Cisco SD-WAN SLA Class Path Change	<input type="checkbox"/>		Network
Critical Traffic Response Time	<input type="checkbox"/>		Application
Custom OID - CPU Idle	<input type="checkbox"/>		Device, Interface
Device CPU Utilization	<input type="checkbox"/>	✓	Device, Interface
Device Flow Stop	<input type="checkbox"/>		Device, Interface
Device Memory Utilization	<input type="checkbox"/>	✓	Device, Interface
Device Reachability	<input type="checkbox"/>	✓	Device, Interface
EIGRP Neighbor Count Decrease	<input type="checkbox"/>		Network
EIGRP Neighbor Count Increase	<input type="checkbox"/>		Network
Fan Tray Operational State	<input type="checkbox"/>		Device, Interface

- Enhanced Alerting to Business Hour support.

Device CPU Utilization

LIST OF INSTANCES ADD NEW INSTANCE **INSTANCE DETAILS**

1. Non Business

2. Business

Default Instance

This alert may contribute to status of an Interface, Device, and/or Site.

Instance Name *
Business

Severity
Warning

Note: Severity for this alert may be reflected as the same severity used in the status. When the severity is info, it does not contribute to the status.

Alert Source *
Time Window: Business Hours Only

Time Window Setting: For sites without business hours configured this setting will be ignored. Alerts can be triggered at any time of day.

Thresholds

For at Least * min

Automatic Resolution Time * min

Utilization * %

- Added service to residually schedule and export system configuration backup via SFTP.

LiveAction NX UX

Settings

Configuration

- Backup History
- Backup Schedule
- Backup Configuration**
- Import/Export
- Data Source Management
- Data Store Management
- Device Entity Page Reports
- Email Configuration
- Integrations
- Instances

BACKUP CONFIGURATION

SFTP Settings

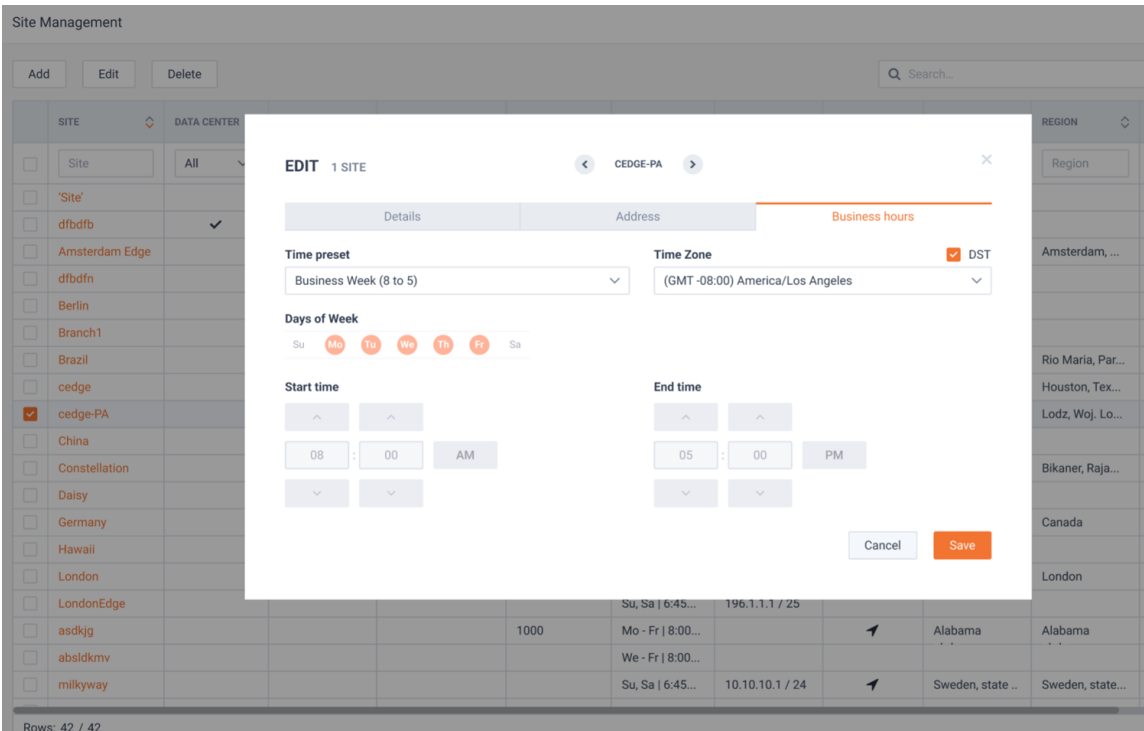
Status: Not Configured Connection: ● Not Connected

Backup Settings

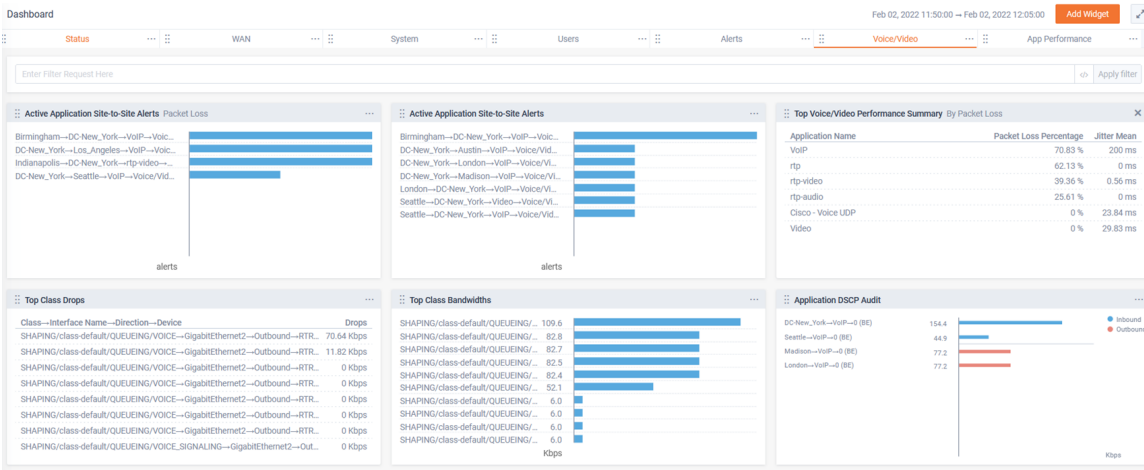
⚠ SFTP should be configured first

Path: Not Configured Encryption: Not Configured

- Enhanced Site Management for easier configuration of 24 hour business hours.



- Added default Application Performance and Voice / Video Performance Dashboards.



- Added additional Web Analytics Reports
 - HTTP Host
 - SSL Common Name
 - HTTP Status Code
 - HTTP Referrer
 - HTTP Media Type
 - Web Analytics Application Response Time
 - Web Analytics URL and URI Response Time

